

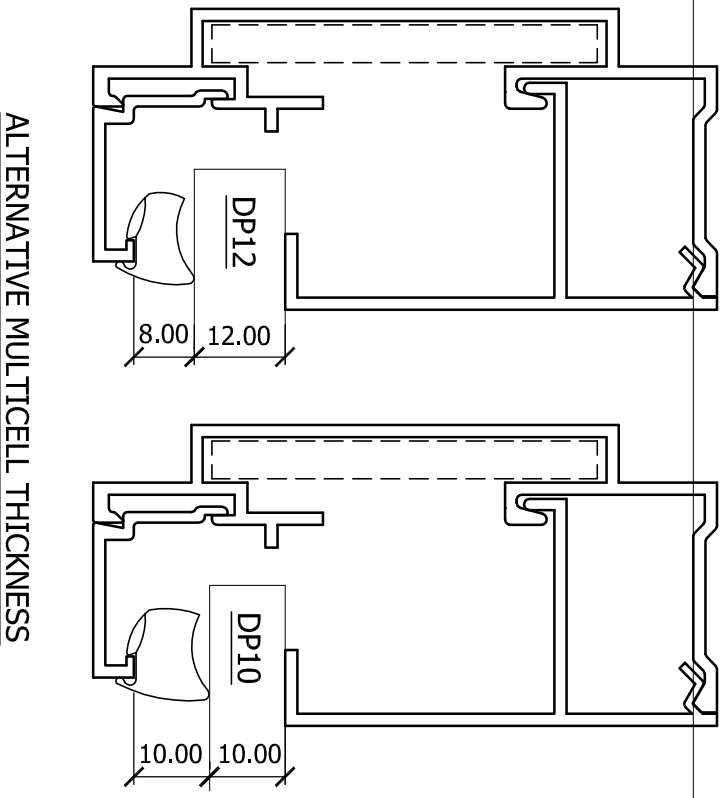
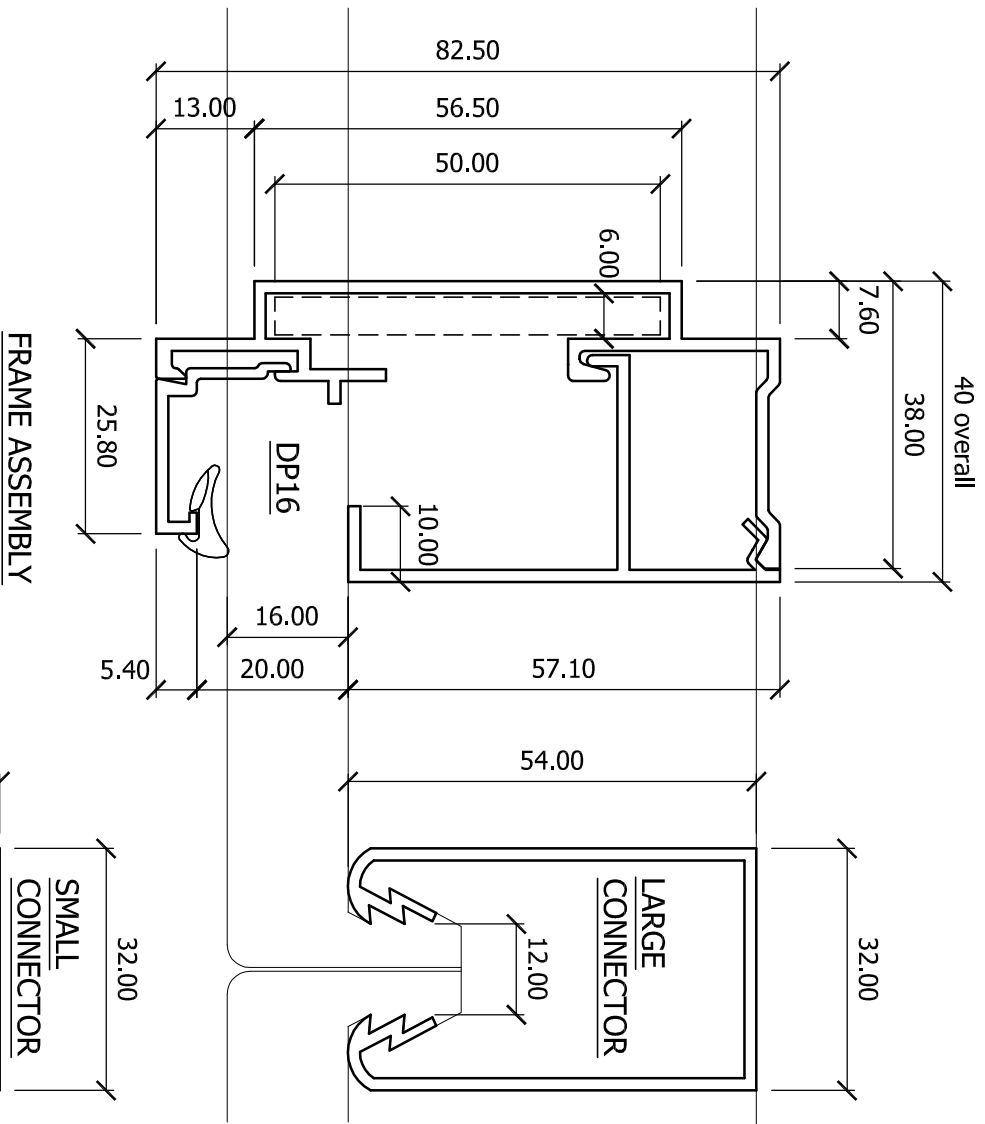
DANPALON

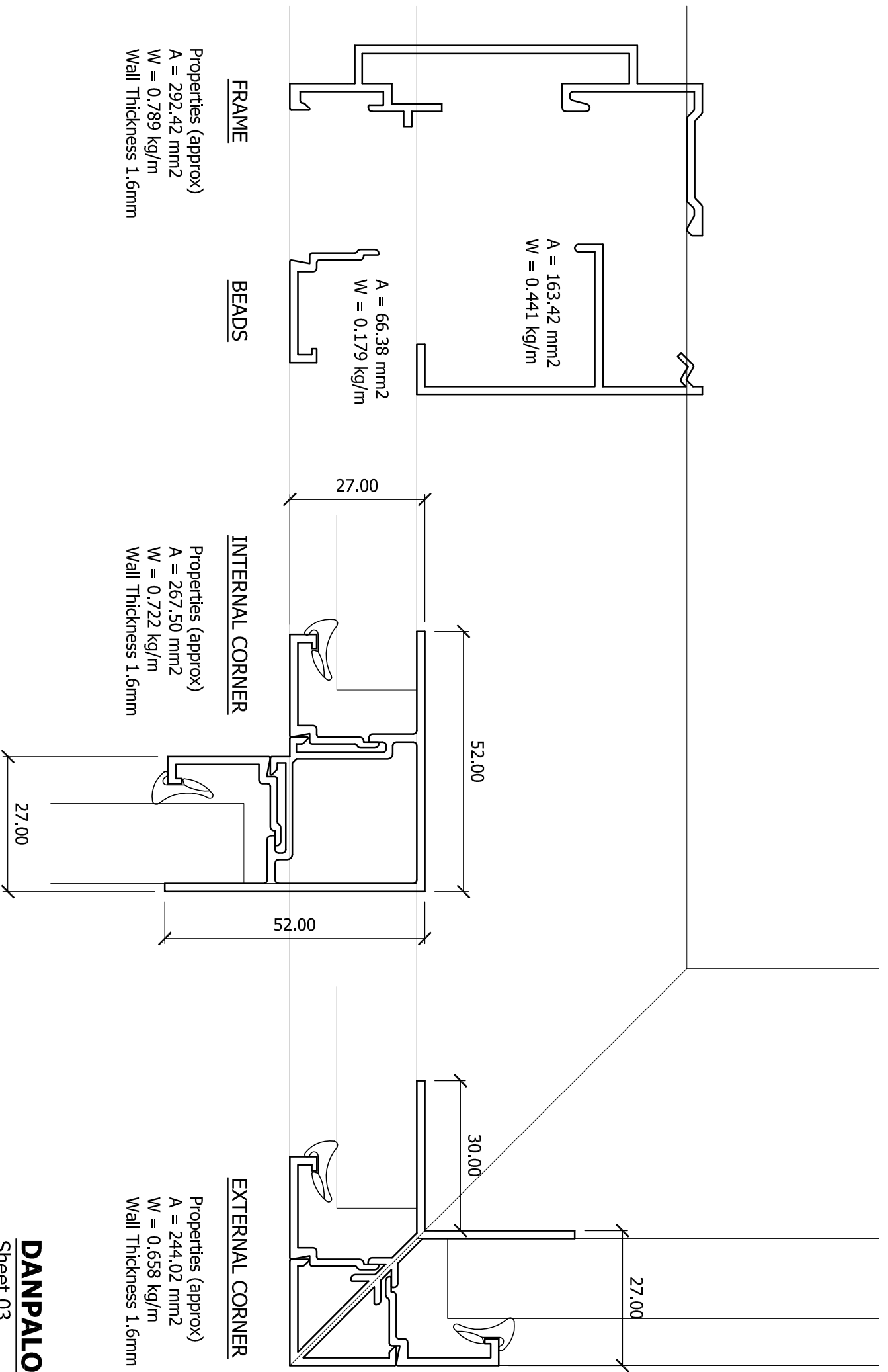
Sheet 01

Revision C

Scale 1:50

Date 14.10.05





FRAME

Properties (approx)
 $A = 292.42 \text{ mm}^2$
 $W = 0.789 \text{ kg/m}$
 Wall Thickness 1.6mm

BEADS

$A = 66.38 \text{ mm}^2$
 $W = 0.179 \text{ kg/m}$

$A = 163.42 \text{ mm}^2$
 $W = 0.441 \text{ kg/m}$

INTERNAL CORNER

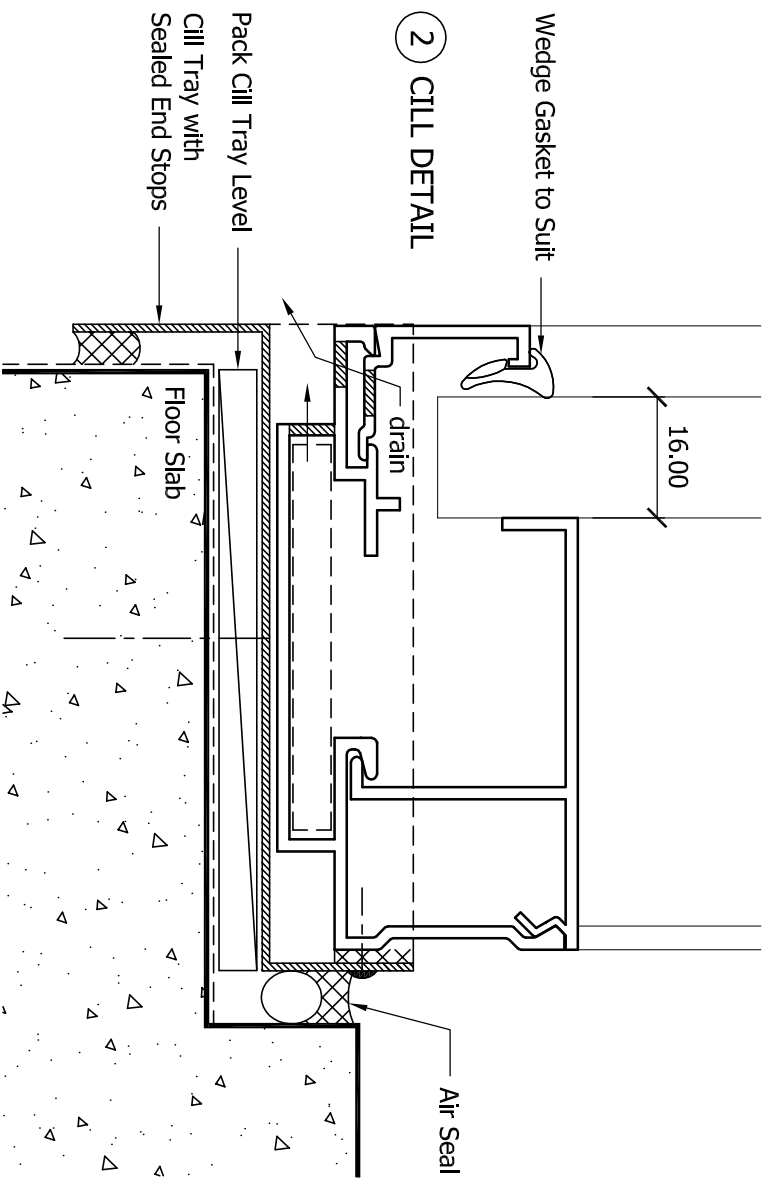
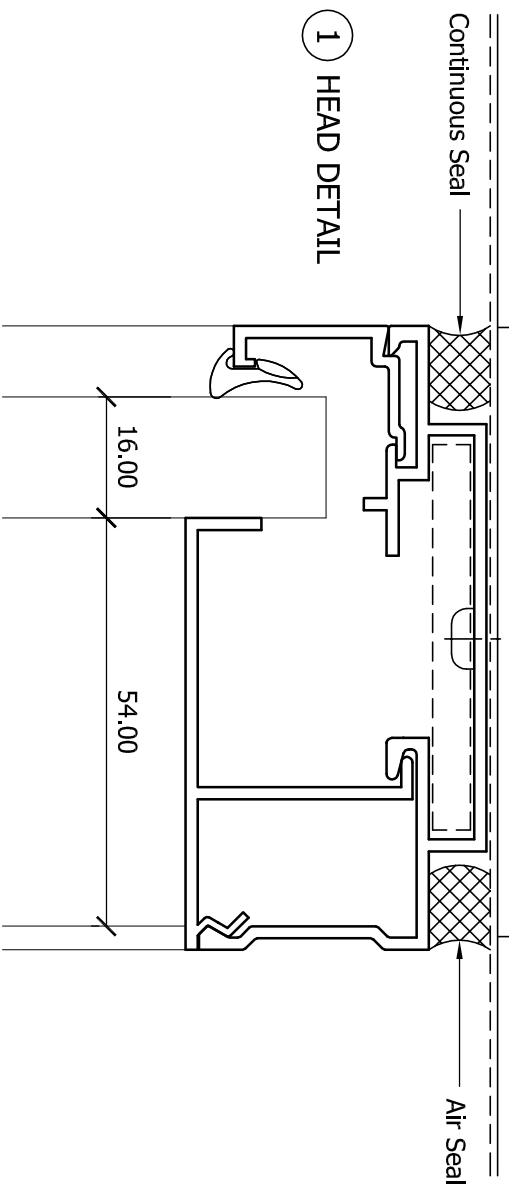
Properties (approx)
 $A = 267.50 \text{ mm}^2$
 $W = 0.722 \text{ kg/m}$
 Wall Thickness 1.6mm

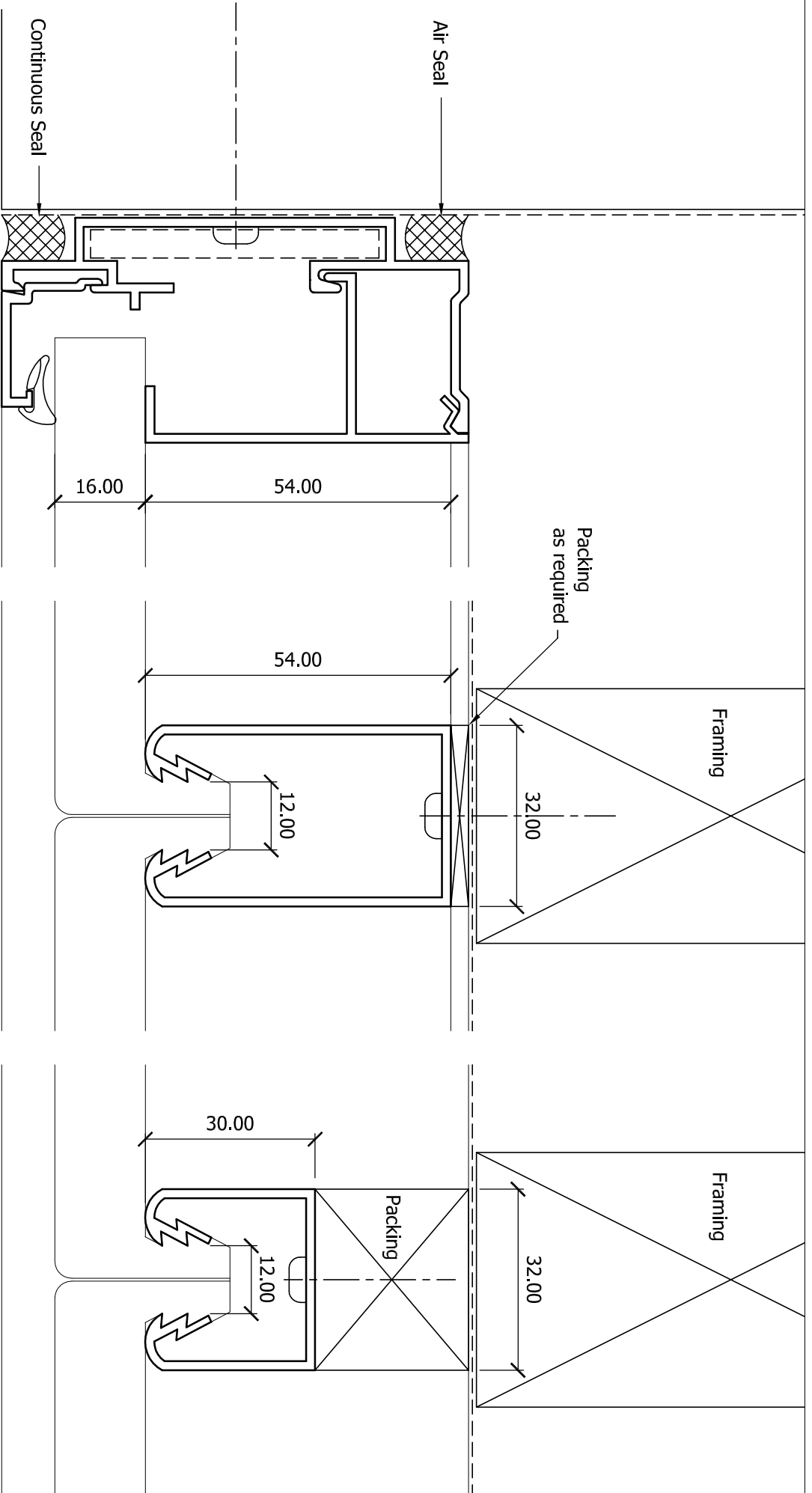
EXTERNAL CORNER

Properties (approx)
 $A = 244.02 \text{ mm}^2$
 $W = 0.658 \text{ kg/m}$
 Wall Thickness 1.6mm

DANPALON

Sheet 03
 Revision C
 Scale 1:1
 Date 14.10.05





3 JAMB DETAIL

4 CONNECTOR

4a CONNECTOR
(Alternative)

DANPALON

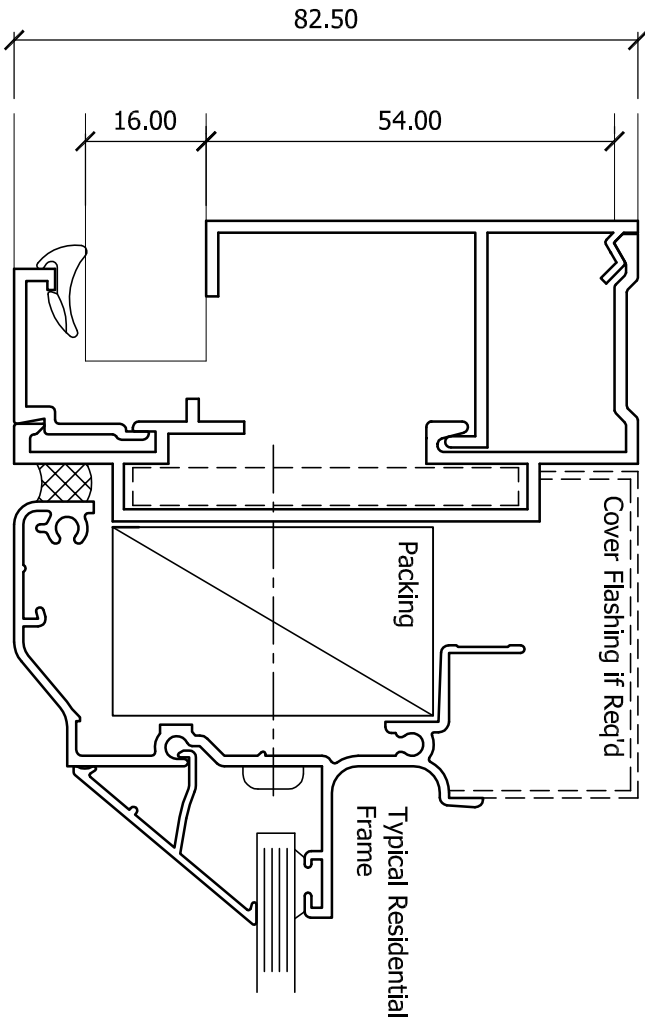
Sheet 05

Revision C

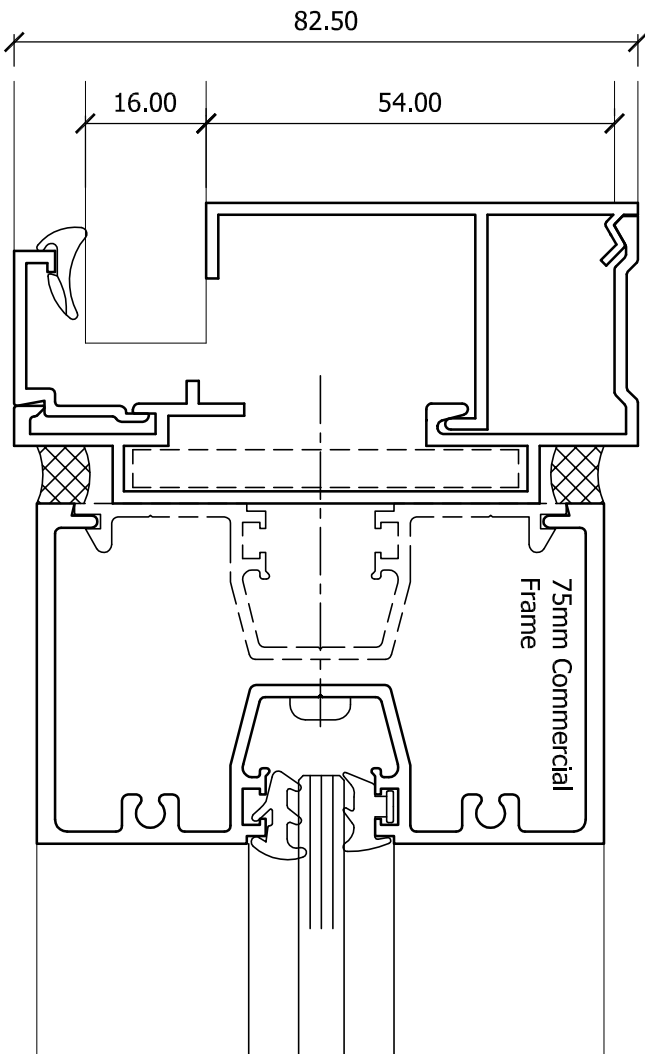
Scale 1:1

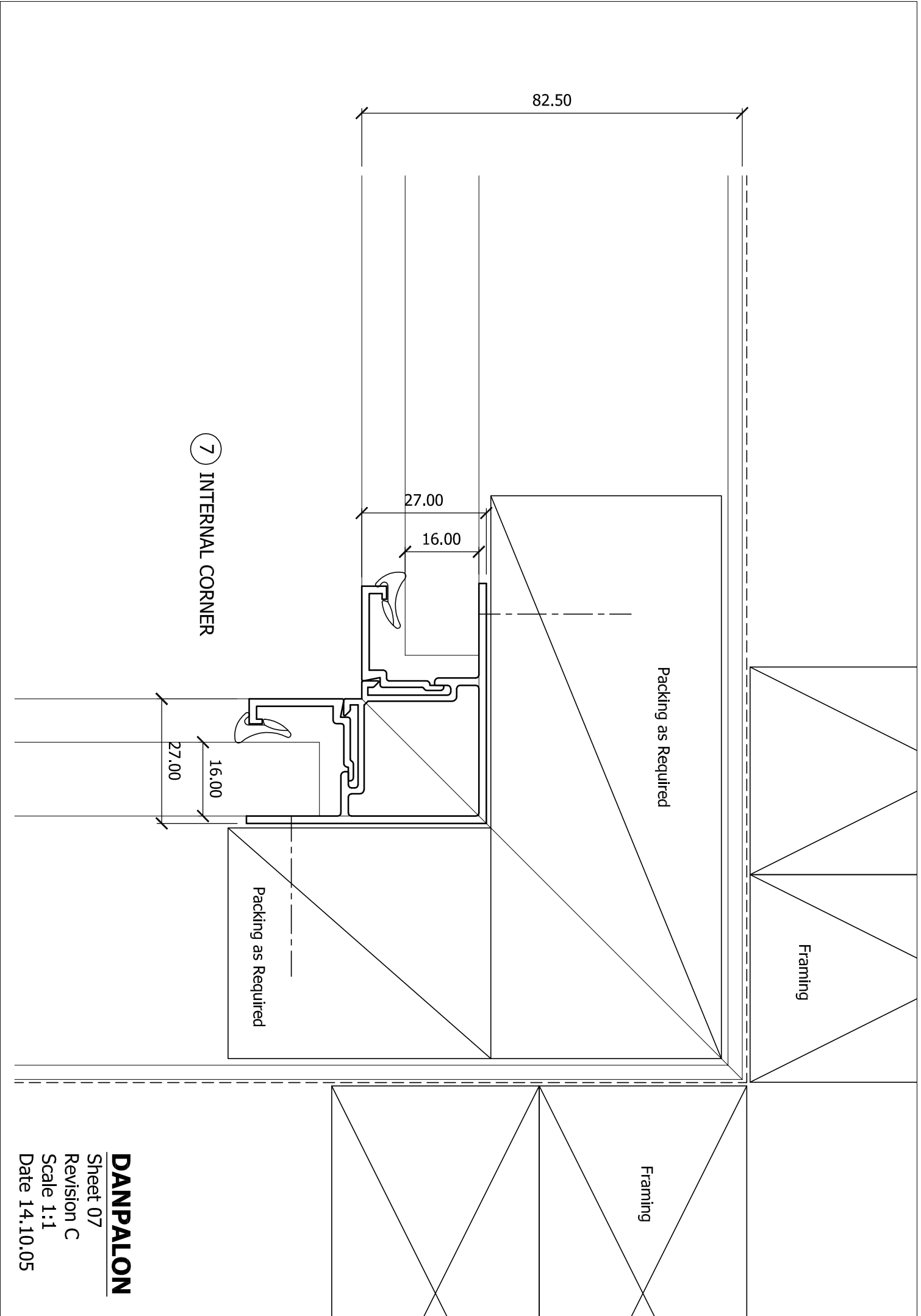
Date 14.10.05

5 WINDOW JUNCTION

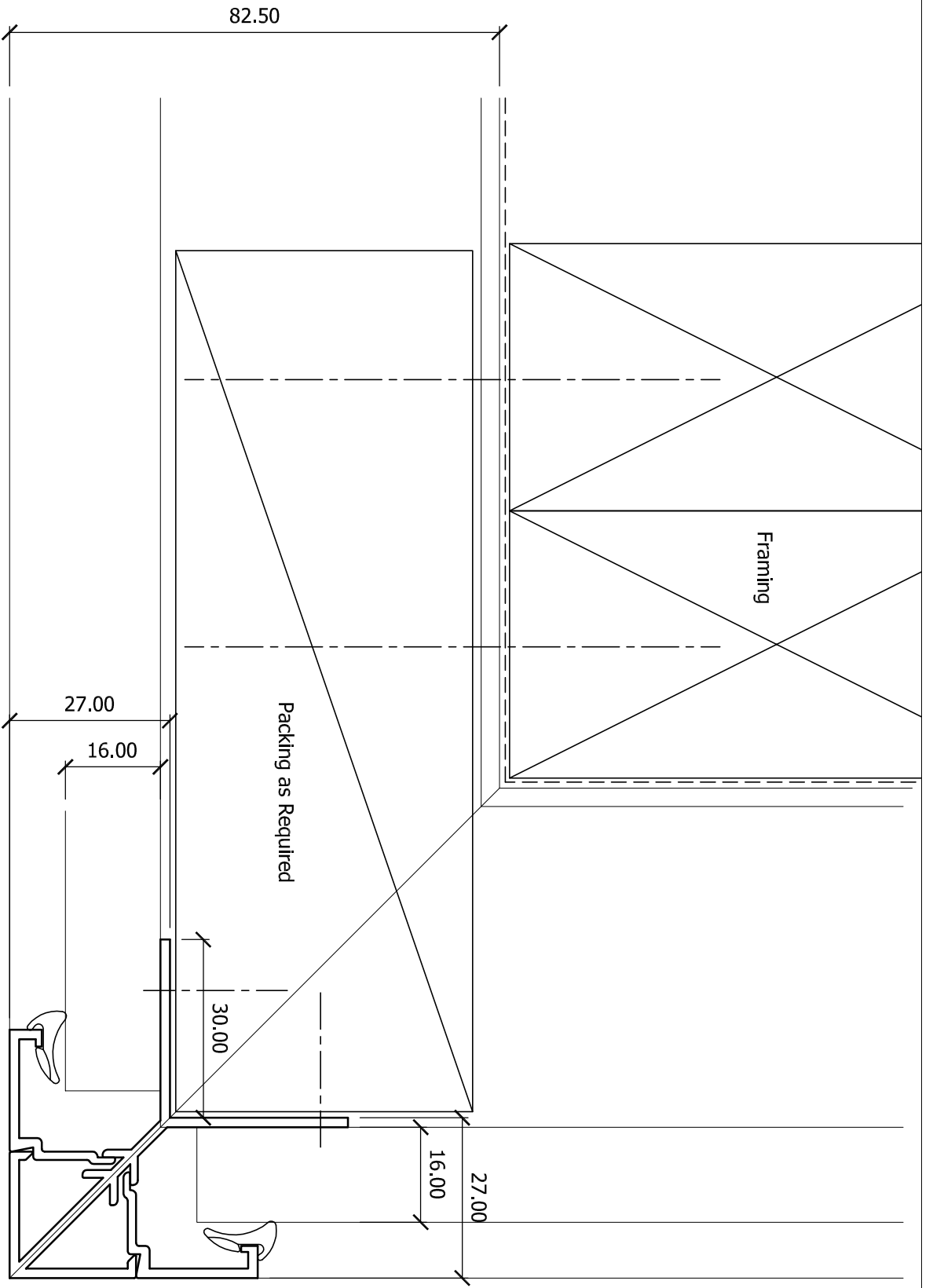


6 WINDOW JUNCTION



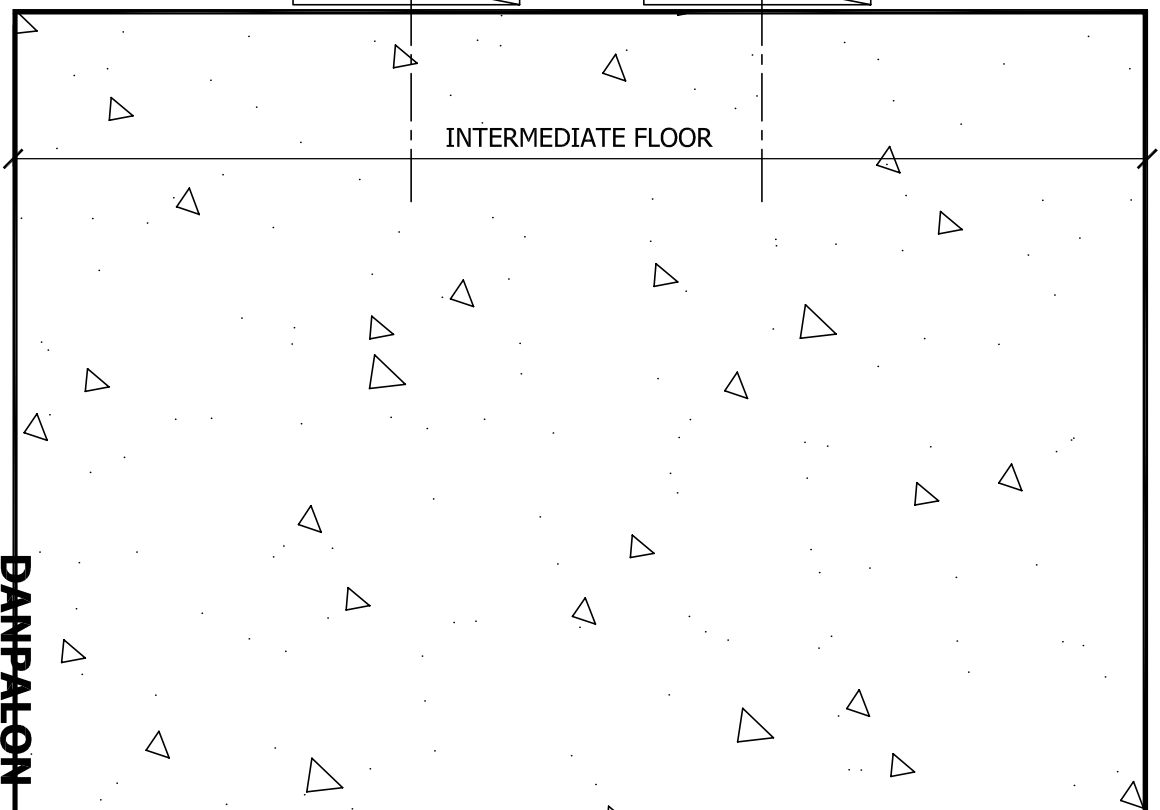
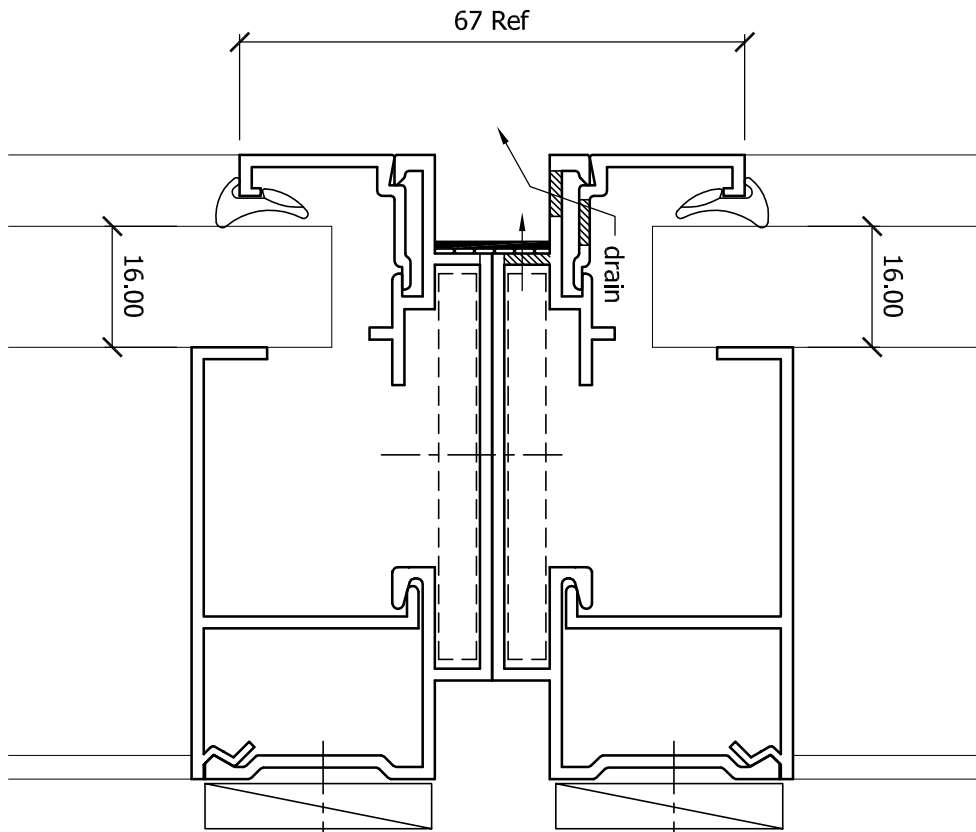


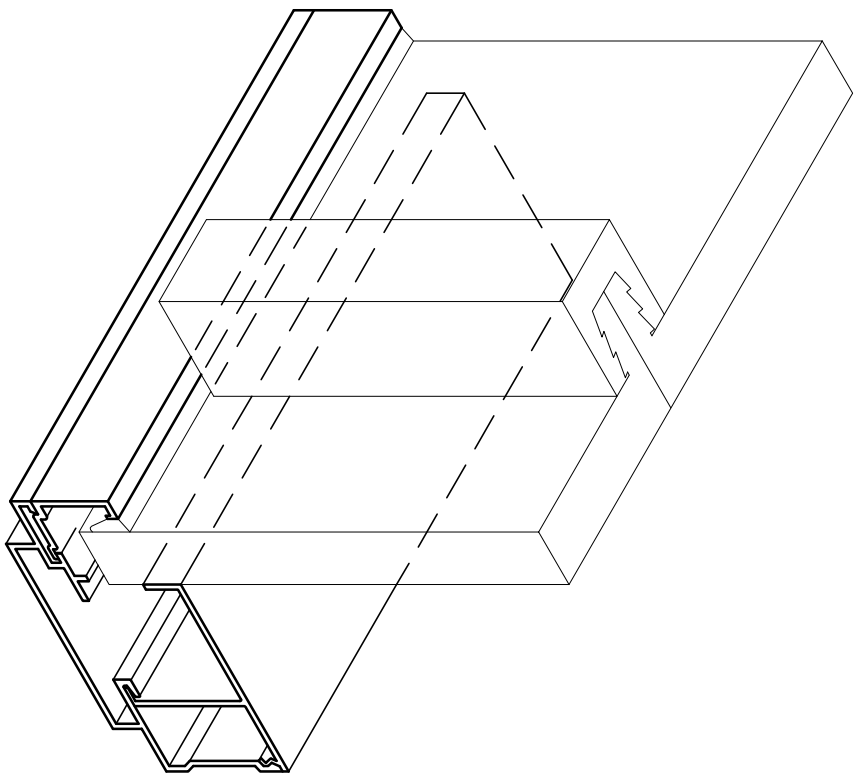
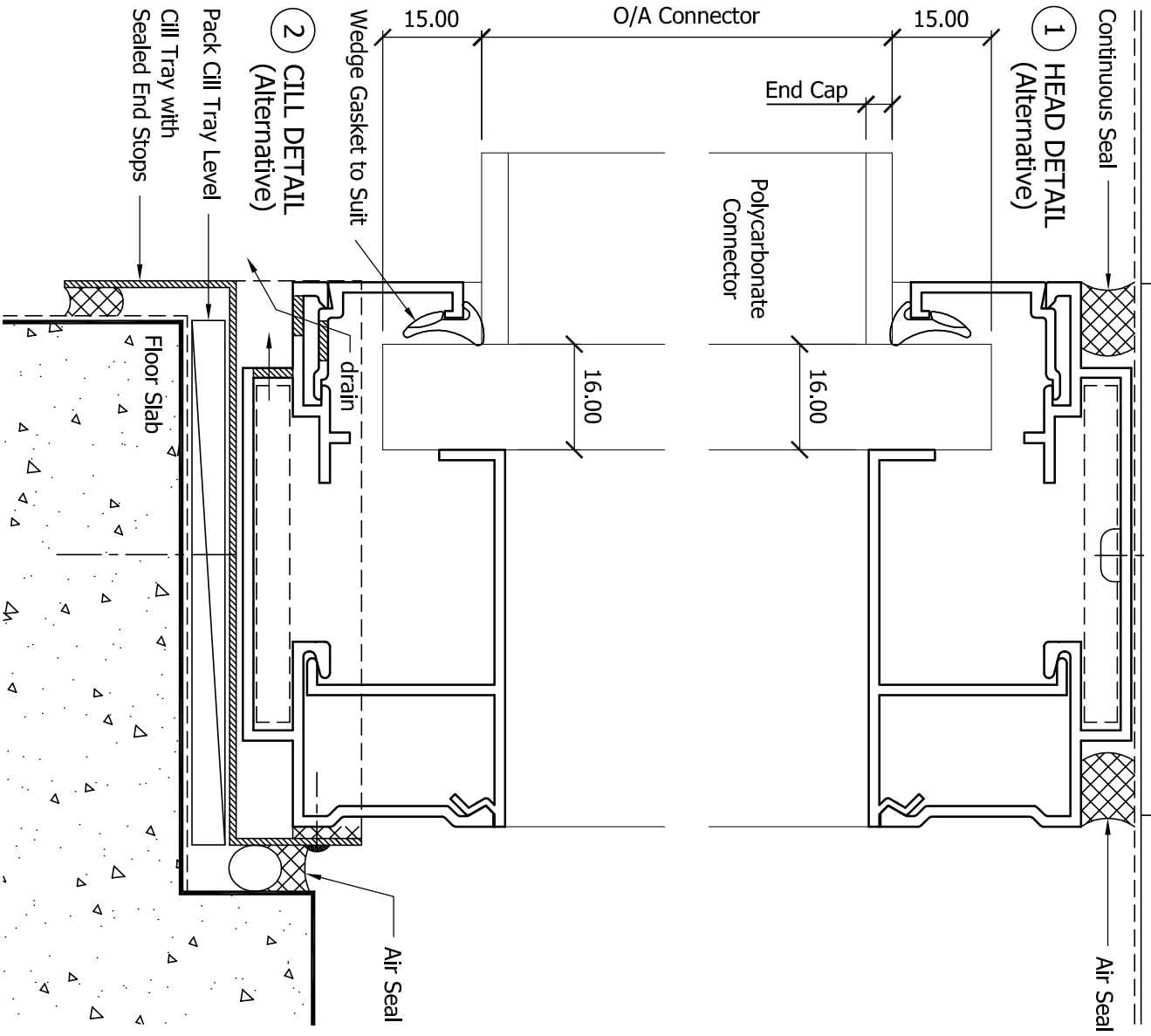
DANPALON
Sheet 07
Revision C
Scale 1:1
Date 14.10.05



8 EXTERNAL CORNER

9 FRAME JUNCTION





DANPALON
 Sheet 10
 Revision C
 Scale 1:1
 Date 14.10.05